

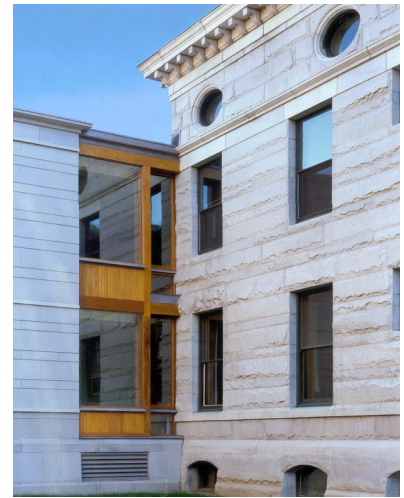
UNDERSTANDING OF CONTEMPORARY LIBRARIES



JSC Library and Learning Center

Many say we live in the Age of Information. We also live in a global environment where we have access to an almost infinite number of opportunities. The challenge we face is to make information and opportunities available to all people, and to facilitate an environment that does so while encouraging learning, community dialogue, and constant collaboration to improve the experience. Libraries, and especially community libraries, are the perfect entities to carry out this mission. As community hubs, they are accessible to a wide range of people, crossing socio-economic, political, and generational boundaries. It is this vision of libraries—as a communal space of learning and exploration for all—that we as an architectural studio strive to highlight in our designs.

As technological and cultural hubs, libraries must also have the flexibility to evolve with their communities and the technological landscape. While this adds a layer of complexity to such projects, gbA has a history of excelling at these goals. Some of the libraries that we have helped to create have been in use by their communities for 20 years. Our designs have assisted the library staff to create the type of inclusive, educational environment described here, and have allowed the programs and collections to grow with the people they serve. When we approach the design of a library, we place an emphasis on forward-thinking and the building's ability to adapt to any changes to come.



Kellogg Hubbard Library, Montpelier



gbA Concept Design for Jeudevine Memorial Library